

Starting Line



Learn practical ways you can connect,
get involved and even become a member
at Walnut Hill Community Church!



WELCOME!

We are so grateful that you want to discover more about Walnut Hill Community Church and how you can better connect with our church family. Thank you for your investment of time with us. Together, we are discovering what it means to be the family of God and pursuing God's design for our lives.

Our vision is to ignite a passion for Jesus in Connecticut, New England and around the world. The hope and prayer are simple — to see every person who is connected to Walnut Hill increasingly transformed by the love and power of Jesus Christ!

As you begin to understand who we are and what God is doing in and through us, it is our desire that you will see yourself becoming part of this church family. We believe that as you do, you will discover encouragement, support, accountability and all the blessings that God has for you.

It is our sincere hope that our time together is well spent and will answer questions that you may have. Whether you checking us out or choosing to become a member, we are excited that you are taking the next step.

Thank you for joining the journey at Walnut Hill.



REV. ADAM DEPASQUALE
Lead Pastor, Executive



REV. CRAIG MOWREY
Lead Pastor, Development



REV. DR. SHAWN WINTERS
Lead Pastor, Teaching



Igniting a passion
FOR JESUS
IN CONNECTICUT, NEW ENGLAND
and around
THE WORLD

OUR HISTORY

PEOPLE WITH
a passion for
God's work

Walnut Hill Community Church was born out of a passion for doing God's work in Connecticut and around the world. Our history is a story of men and women **willing to follow God's leading into uncharted territory and willing to trust Him** to do extraordinary things in and through them.

A VISION
BORN FROM A
home Bible
study

Birthed out of a home Bible study in 1981, seven couples dreamed of a church that would commit to preach the Word of God, **welcome people of all backgrounds**, raise up the next generation and share the Good news of Jesus in their community and around world.

SERVICES
MOVE FROM
home to hotel

From the day the church's doors opened in 1982, the grace of God could be felt as 80 people began gathering in a local hotel. Within 18 months, the church nearly doubled in size and **a family was called to the mission field**.

MINISTRIES
BEGIN TO
overflow with
growth

With children's and youth ministries in full force, adult classes and more, the church began outgrowing rented facilities. By 1988, 350 people called the church home. Ministry flourished as members were led to begin a camp, **an inner city mentoring program and missions sending organizations**.

BUILDING THE
foundations in
Bethel

By 1995, construction on the church's first building was completed and **services began being held at 156 Walnut Hill Road in Bethel**. With room to expand, the church began programs to promote healthy homes, be an irresistible influence in the community and first articulated a calling to become a **regional resource in New England**.

GOD'S CONTINUES
TO BLESS
a growing
congregation

God's blessing continued and by 2004, the church had completed its **first expansion project** and was now 1,200 people strong.

**THE CHURCH IGNITES
with 24/7 prayer**

In 2005, **a fresh emphasis on prayer was birthed** and within seven months hundreds of people committed to pray an hour a week so that the church could cover **24 hours a day, 7 days a week** in prayer.

**A CHURCH-WIDE
focus on
evangelism**

Ministry again flourished with new ministries: women began serving in the local prison, church partnerships were initiated around the world and **evangelism became the heart cry** of the church.

**THE TIME FOR
expansion
arrives**

By 2010, Walnut Hill had grown to 2,000 people, the building had been renovated again and there was no longer room to grow. With a commitment to seeing people meet Jesus, **a unified elder board led the church into launching satellite campuses.**

**THE BIRTH OF
satellite
campuses**

Over the next two years, **four campuses opened their doors**, bringing Walnut Hill deeper into Connecticut. Campuses were launched in **Waterbury** in 2010, **Seymour** in 2011, **Derby** and **New Milford** in 2012. With a desire to see an even greater impact in the Valley, in November of 2017, the Seymour and Derby campuses came together to form a unified Valley Campus in Derby. In March 2020, we launched our **Online** Campus.

**OVER THE LAST 10 YEARS, MORE THAN 1,200 PEOPLE HAVE
SURRENDERED TO JESUS THROUGH THE MINISTRIES AT WALNUT HILL.**

**CONTINUING TO
serve God's
people by the
millions**

Millions of people are impacted through Walnut Hill's global partnerships, children in communities participated in summer camps, youth are sent and serve across New England. The homeless are being cared for, prisoners are being visited, at risk boys and girls are being mentored, schools are being supported, marriages are being restored, families are being comforted, **freedom is found in Christ.**

God is not finished with Walnut Hill yet.

We are a unique family of every age, stage, diverse backgrounds and walk of life called to ignite a passion for Jesus in Connecticut, New England and around the world.

OUR VALUES

family

noun \fam-le\ a group of people united by certain convictions or a common affiliation not defined by age and background.

Ex: God decided in advance to adopt us into His own family by bringing us to Himself through Jesus Christ. This is what He wanted to do, and it gave Him great pleasure. Eph. 1:5

We envision a family of every age, stage, diverse background and walk of life seeking God, reaching out, caring for one another and serving together for the glory of God and the expansion of His Kingdom.

We believe that it is time for the family of God to take its place and shine so brightly that millions of people will come to know the love, hope, healing and security found in Jesus Christ.

We believe God is calling Walnut Hill to be a family that is:



**SEEKING
GOD**



**CARING
FOR ONE
ANOTHER**



**SERVING
TOGETHER**



**REACHING
OUT**

OUR VISION

Every year, our Lead Pastors pray and choose an annual theme to set the course for the year. This theme dictates the focus for ministry planning across the church.

For 2024-25,
our theme is

**LIVE
& LOVE
WELL**

Together, we will prayerfully and intentionally seek God's help to live and love well through our words and actions. It begins by being in relationship with Jesus, and then allowing the Spirit and the Word to shape our hearts and minds to shine brightly for Him.



FIRST 20

Spending the first best 20 minutes of the day in prayer (first-20.org.)



MY CREW

Forming a group of 3-5 people to challenge and encourage us in our faith, seeking mentors in our lives and investing in the lives of others (mycrewkit.org.)



Seeking God

Every person engaging in the transformative power and knowledge of Jesus Christ.

THIS HAPPENS THROUGH:



TRANSFORMATIVE
BIBLICAL
PREACHING



WHOLEHEARTED
WORSHIP



SACRIFICIAL
PRAYER



INTENTIONAL
DISCIPLESHIP





Caring for One Another

Committed to equipping and revitalizing our families for Kingdom impact and growth.

THIS HAPPENS THROUGH:



RELEVANT MARRIAGE
AND FAMILY RESOURCES



COMPASSION-DRIVEN
CARE MINISTRIES



CHAMPIONING A
MULTICULTURAL MINISTRY



Serving Together

A thriving lay leadership empowering every generation for ministry and mission.

THIS HAPPENS THROUGH:



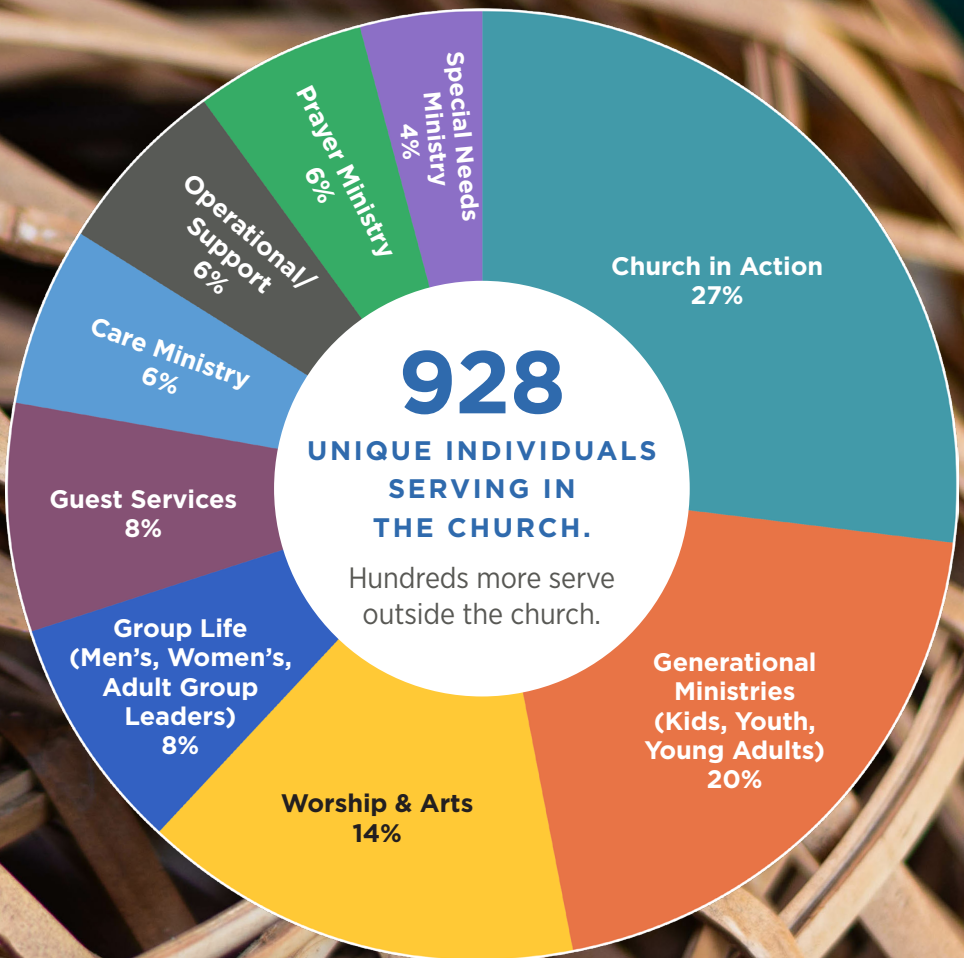
VIBRANT CHILDREN'S AND YOUTH MINISTRIES



DYNAMIC LEADERSHIP DEVELOPMENT



STRATEGIC MOBILIZATION OF GOD'S PEOPLE





Reaching Out

Three million people around the world encountering Jesus through a growing number of local campuses and partnerships.

THIS HAPPENS THROUGH:



AUTHENTIC
EVANGELISM



EFFECTIVE
COMMUNITY
ENGAGEMENT



STRATEGIC CAMPUS
DEVELOPMENT



MISSIONAL
COLLABORATION

WHAT WE BELIEVE

Christ is the visible image of the invisible God.

He existed before anything was created
and is supreme over all creation,
for through Him God created everything
in the heavenly realms and on earth.

He made the things we can see
and the things we can't see —
such as thrones, kingdoms, rulers,
and authorities in the unseen world.

Everything was created through Him and for Him.
He existed before anything else,
and He holds all creation together.

Christ is also the head of the church,
which is His body.

He is the beginning,
supreme over all who rise from the dead.
So He is first in everything.

For God in all His fullness
was pleased to live in Christ,
and through Him God reconciled
everything to Himself.

He made peace with everything in Heaven and on earth
by means of Christ's blood on the cross.

This includes you who were once far away from God.
You were His enemies,
separated from Him by your evil thoughts and actions.
Yet now He has reconciled you to Himself
through the death of Christ in his physical body.
As a result, He has brought you into His own presence,
and you are holy and blameless
as you stand before Him without a single fault.

COLOSSIANS 1:15-22

Walnut Hill Community Church is all about Jesus. We believe that the person of Jesus Christ is at the heart of the Gospel message. In Jesus, God is revealed, forgiveness and freedom are offered, transformation is realized, and an everlasting relationship is built.

In essential beliefs* – we have

unity

noun \ yü-nə-tē \ the state of being in full agreement.

In nonessential beliefs – we have

liberty

noun \ li-bər-tē \ the quality or state of being free.

In all our beliefs – we show

charity

noun \ cher-ə-tē \ benevolent goodwill toward or love of humanity.



What are the essentials?

*Please refer to pages 3 and 4 in the Additional Reading Materials.

A high-angle, wide shot of a large, diverse crowd of people gathered on a green lawn. The people are engaged in various activities, some standing in groups, some walking, and some sitting on the grass. The scene is bright and sunny, with long shadows cast across the grass. The overall atmosphere is one of a busy, social outdoor event.

WHAT WE PRACTICE

koinonía

noun \ ' kōinə'nēə \:

Christian fellowship or communion with God or other Christians.

Ex: All the believers devoted themselves to the apostles' teaching, and to fellowship, and to sharing in meals (including the Lord's Supper), and to prayer. Acts 2:42

1 Prayer

“Devote yourselves to prayer with an alert mind and a thankful heart.” COLOSSIANS 4:2

At Walnut Hill, we seek intimate fellowship with the triune God — listening to His voice and His Word, and interacting with Him in the everyday experiences of life. We believe that one encounter with the living God can transform a life.

2 Discipleship

“And Jesus said to them, ‘Follow Me, and I will make you become fishers of men.’” MARK 1:17

By following Jesus, we have the fullest life. We actively look for opportunities to grow in the knowledge of who He is, to challenge one another to follow Him, to be transformed by His love and to make a difference by serving with the gifts He provides.

3 Spirit-Led Life

“...I am the vine, you are the branches. If a man remains in me and I in him, he will bear much fruit; apart from me you can do nothing...” JOHN 15:5

We believe that the only possible way to live the Christian life is by the power of the Holy Spirit working in and through us. We seek to practice a daily dependence on God’s Spirit leading and enabling us to follow Him.

4 Giving

“Bring the whole tithe into the storehouse...” MALACHI 3:10

We practice tithing as an act of worship to our Savior and Lord. We recognize that tithing 10% of our income is the starting point and that giving above and beyond our tithing responsibility is our privilege.

5 Sharing the Gospel

“But in your hearts set apart Christ as Lord. Always be prepared to give an answer to everyone who asks you to give the reason for the hope that you have. But do this with gentleness and respect.” 1 PETER 3:15

We practice sharing Christ by our actions and our words at home, work and in our community. It is the responsibility of every Christian to demonstrate and share the Good News of the Gospel with those whom God brings across our path.

6 Priesthood of the Believer

“But you are a chosen people, a royal priesthood, a holy nation, a people belonging to God, that you may declare the praises of Him who called you out of darkness into his wonderful light.” 1 PETER 2:9

We practice the truth that every believer is a minister. We encourage every member to find a place of service and ministry. Every believer has direct access to God through prayer, worship and Bible reading.

7 Baptism

“...buried with Him in baptism, and raised with Him through your faith in the power of God...” COLOSSIANS 2:12

We practice baptism by immersion under water — the way Jesus was baptized. As a church ordinance, baptism is strongly encouraged upon entrance into church membership as well as to participating in the Lord’s Supper.

8 The Lord’s Supper

“For as often as you eat this bread and drink this cup, you proclaim the Lord’s death till He comes.” 1 CORINTHIANS 11:23-29

We practice the Lord’s Supper on a regular basis. It is a symbolic act of obedience through which Christ-followers remember the death of Jesus and anticipate His second coming.



OUR LEADERSHIP

We are governed by a **Board of Elders**, elected by our members, who are responsible for providing spiritual leadership and oversight. The Elders serve for a term of four years. In any given week, our Elders can be found praying with individuals, serving alongside the congregation or supporting our pastoral team as they lead daily ministry.

LEAD PASTOR TEAM

Walnut Hill operates in a Team Leadership Model where three pastors take on the responsibilities of a traditional Senior Pastor role to oversee key areas of the church. Our Lead Pastor Team is Adam DePasquale (Lead Pastor, Executive), Craig Mowrey (Lead Pastor, Development) and Shawn Winters (Lead Pastor, Teaching.)



REV. ADAM DEPASQUALE
Lead Pastor, Executive

ROLE:

The enablement of ministry and activation of Walnut Hill's vision and strategy.

As Executive Pastor, Adam is responsible for the accomplishment of the church's mission through the strategic oversight of ministry, operations and staff. He oversees Walnut Hill's operations (finance, communications, facilities, administration, IT and HR), as well as ministries such as worship and arts, discipleship and care.



REV. CRAIG MOWREY
Lead Pastor, Development

ROLE:

The development and mobilization of God's people for life, ministry and mission.

Craig is gifted in shepherding and equipping leaders, overseeing ministry and providing pastoral care. He provides oversight for our Campus Pastor Team, local and global outreach partnerships (Church in Action) and Next Generation ministries while playing a vital role in developing leaders and fundraising for campus initiatives.



REV. DR. SHAWN WINTERS
Lead Pastor, Teaching

ROLE:

The teaching and preaching of God's Word and discipling of His people.

Shawn is passionate about preaching, teaching and helping people connect Scripture to their daily lives. Having served as a pastor for 30 years, Shawn has proven leadership experience, including serving as a Senior Pastor and overseeing discipleship at a mega church in MN. At Walnut Hill, Shawn oversees preaching, teaching and discipleship and serves as Campus Pastor in Bethel, the largest Walnut Hill campus.

A top-down view of several hands of different skin tones cupping dark brown soil. Small green seedlings with three leaves are growing in the soil. The hands are arranged in a circle, with some fingers interlocking. The background is a blurred green lawn.

CAMPUS LEADERSHIP



Bethel Campus

156 Walnut Hill Road, Bethel, CT 06801
Service Times: Sunday
8:30 a.m., 9 a.m., 11 a.m.

Shawn Winters

Lead Pastor, Teaching &
Bethel Campus Pastor
leadpastors@walnuthillcc.org



Waterbury Campus

274 Bunker Hill Avenue
Waterbury, CT 06708
Service Times:
Sunday 9 a.m., 11 a.m.

Bryan Cerrone

Campus Pastor
bcerrone@walnuthillcc.org



New Milford Campus

19 Dorwin Hill Road
New Milford, CT 06776
Service Time: Sunday 9:30 a.m.

Brian Bergen

New Milford Campus
& Young Adult Pastor
bbergen@walnuthillcc.org



The Valley in Derby

27 9th Street, Derby, CT 06418
Service Time: Sunday 10 a.m.

Joshua Multunas

Valley Campus Pastor
jmultunas@walnuthillcc.org



Online Campus

walnuthillonline.org
Service Times: Sunday 9 a.m., 11 a.m.

Crystal Ellington

Pastor of Prayer & the Online Campus
crystal@walnuthillcc.org



MINISTRY PASTORS & DIRECTORS

In addition to our campus pastors, we have a team of pastors who are directly responsible for specific areas of ministry, from kids, youth and adults, to care, worship & the arts, prayer and evangelism. Additionally, directors provide support and guidance to the staff to keep the mission forefront and the infrastructure healthy and running smoothly.

For a current listing of our pastors, directors and staff, visit walnuthillcc.org/our-leadership.



MEMBERSHIP

commitment

noun \kuh-mit-muh nt\ : the act of pledging or engaging oneself.

**Ex: Love never gives up, never loses faith, is always hopeful,
and endures through every circumstance. 1 Cor 13:7**

While some people choose to sporadically visit or even regularly attend Walnut Hill, we encourage those who have surrendered their lives to Jesus to commit themselves to the church family and the mission for which we exist. We call this membership.

MEMBERS COMMIT TO:

protect unity

I will **protect** the unity of my church family.

share responsibilities

I will **share** the responsibilities of my church family.

serve ministries

I will **serve** the ministries of my church family.

support vision + testimony

I will **support** the vision and testimony of my church family.

Please refer to pages 5 and 6 in the Additional Reading Materials for more information.

A photograph of a group of people sitting in a church, with their hands clasped in prayer. The image is slightly blurred, focusing on the hands in the foreground. The background shows other people sitting in a similar posture, suggesting a church service or a prayer meeting.

BECOMING A MEMBER

Membership is required for leadership positions within the church as well as some volunteer positions. It is also required to vote at Congregational Meetings on significant decisions, including the confirmation of new Elders, approval of our annual budget, affirmation of changes in bylaws, etc.

How do I become a member?

- 1 Attend a Starting Line Class.
- 2 Complete the Additional Reading Materials.
 - **Our Faith Statement**
 - **Our Membership Commitment**
 - **The Meaning of Baptism**
 - **The Meaning of the Lord's Supper**
 - **Constitution and Bylaws**
- 3 Fill out the membership forms.
- 4 Share your faith story with an Elder.
(Check out the next page for a helpful outline.)
- 5 Be affirmed by the Elder Board and receive new member letter.



YOUR STORY

WE WANT TO HEAR YOUR STORY

- 1 What did your life look like before you met Jesus?
- 2 What were the circumstances surrounding your surrender?
- 3 How have you seen your life changed?



A PRAYER OF BLESSING

As we reflect on the past year,
We are humbled and thankful
for all God chose to accomplish through Walnut Hill.

Thank you to each and every volunteer and staff member
Who has invested their time, energy and finances,
Who has prayed and sought the Lord's guidance
On how to be a family.

We are a family.
A family that seeks God,
Reaches out,
Serves together and
Cares for one another.

With great expectation and anticipation,
We offer ourselves anew,
With arms spread wide
Ready to receive all that God has in store
For the year to come.

May we hear His voice loudly and clearly
Guiding us through the days ahead,
Confident in His promise that
The best is yet to come.



WALNUT HILL

COMMUNITY CHURCH

walnut Hill cc.org | 203.796.7373

